

# **Tehama County Schools’ Reopening Plan**



**TK-12th Grade**

**Every Student, Every Day!**

**Introduction**

As a result of the COVID-19 pandemic and subsequent state of emergency declared by Governor Newsom, Tehama County schools have been closed since March 16, 2020. We recognize that school and education, as we have known them, have changed in unprecedented ways. We recognize the call for a thoughtful reopening plan moving forward to ensure the health and safety of all our students and staff.

The Tehama County Schools' Reopening Plan ensures that we are moving together as a county to best support the families and employees we serve. It is expected that this plan will commence with the onset of the 2020-2021 academic year.

The following guidance was used in generating this plan:

- World Health Organization (WHO): *Considerations for school-related public health measures in the context of COVID-19* (10 May 2020)
- Centers for Disease Control and Prevention (CDC): *Interim Guidance for Administrators of US K-12 Schools and Child Care Programs* (15 May 2020)
- California Department of Public Health (CDPH): *Guidance for Schools and School-based Programs* (5 June 2020)
- California Department of Education (CDE): *Stronger Together: A Guidebook for the Safe Reopening of California's Public Schools* (8 June 2020)

The base plan of the Reopening Plan was reviewed and approved by the Tehama County Health Services Agency (TCHSA) to ensure that the plan met all requirements for health and safety. Each school district then added subsequent appendices to attend to the uniquenesses of the details at each district/school site. Finally, the Reopening Plan with additional appendices was presented and approved by each School Board in the county, respectively.

It is our greatest intention to resume in-person educational opportunities for all of our students as soon as is safely possible. We continue to promote our unified vision, "Every student, every day!" It indeed will take all of us working collaboratively together to ensure we are able to meet the needs of all of our students in our community during this unprecedented time. We thank you in advance for your patience as you join us in this journey to get the children of Tehama County back to school!

The Tehama County Schools' Reopening Plan is supported by the following Districts:

**Antelope Elementary School District**

Corning Union Elementary School District

**Commented [1]:** Yellow highlight indicates which Districts have reviewed and are in support.

*Corning Union High School District*

*Elkins Elementary School*

*Evergreen Union Elementary School District*

*Flournoy Union School District*

*Gerber Union Elementary School District*

*Kirkwood Elementary School*

*Lassen View Union Elementary School District*

*Los Molinos Unified School District*

*Red Bluff Joint Union High School District*

*Red Bluff Union Elementary School District*

*Reeds Creek Elementary School*

*Richfield Elementary School District*

The Tehama County Schools' Reopening Plan was approved by the Tehama County Health Services Agency:

Dr. Wickenheiser, **Date TBD**

The Tehama County Schools' Reopening Plan with subsequent appendices was approved by the [REDACTED] District School Board:

[REDACTED] School Board Approval; **Date TBD**

### **Local Conditions**

Physically reopening our Districts and enacting the TCS Reopening Plan will be guided by a continual risk-based approach to maximize the educational and health benefits for students, staff, and the wider community in Tehama County. We will continue to work in collaboration with Tehama County Health Services Agency (TCHSA) to ensure that our plan acts in response to the ever-changing local conditions; it will be scaled up or down

for Districts/sites depending upon local cases and community spread until we are able to resume full operations in Phase 4 as classified by the Centers for Disease Control and Prevention (CDC) and California Department of Public Health (CDPH) (Plan A+). We will continue to seek out information from TCHSA, CDC, and CDPH as new scientific knowledge and subsequent guidance from them and the California Department of Education is given; we will then work in coordination with our local stakeholders to refine the details of our appendices as necessary.

### **The Tehama County Schools' Reopening Plan**

The TCS Reopening Plan can be seen on the next page. All parts of the plan are rooted in a promotion of communication, promotion of healthy hygiene practices, the intensifying of cleaning, disinfecting, and ventilation, and illness prevention to ensure the health and safety of our students and staff.

### **School Status**

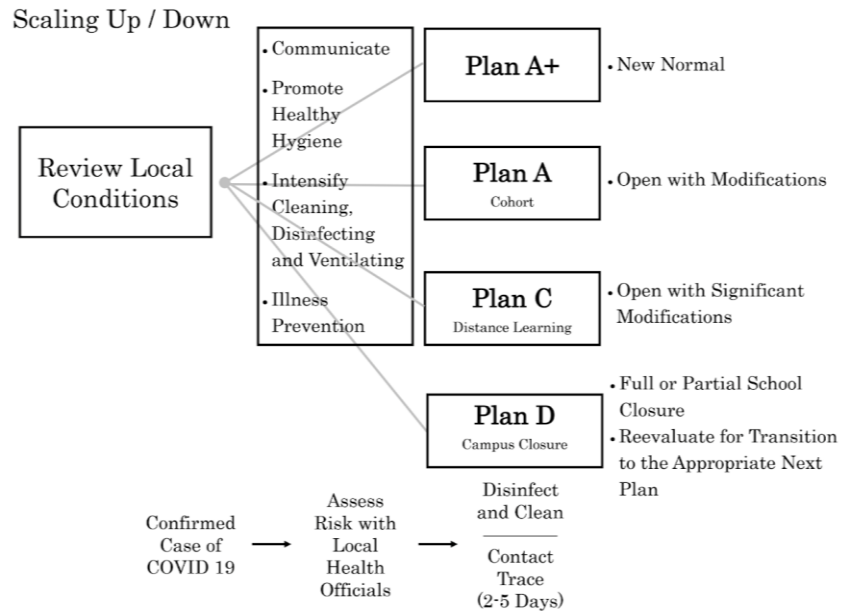
When approved/directed by the county health official, our school/s will offer Plan A to families - open with modifications. This plan includes a full-time in-person program for students who select it and an at-home Independent Study Program for those families who prefer to keep their children home. This plan will include screening, monitoring, contact tracing, and the use of face coverings when physical distancing is not feasible.

When/if the local public health official directs/approves, our school/s will offer Plan C to families - open with significant modifications. This plan includes an at-home Distance Learning Program and continues to offer the at-home Independent Study Program. This plan includes screening, monitoring, contact tracing, and the use of face coverings when physical distancing is not feasible.

When/if we experience a positive Covid-19 case on a campus or a community surge, our school/s or site will implement Plan D. This plan involves assessing the risk within the specific community and potentially closing the school/site/portion of a site for a short period of time based upon public health guidance. It involves intensifying cleaning and disinfecting areas, contact tracing, and promoting social isolation.

	Phase 1 Campus Closure Plan D	Phase 2 Distance Learning Plan C	Phase 3 Cohort Plan A	Phase 4 Plan A+
School Status	Full or partial closure	Open with significant modifications	Open with modifications	New Normal

Illness Prevention	N/A	Screening & Monitoring Contact Tracing	Screening & Monitoring Contact Tracing	Monitoring
Physical Distancing/ Face Coverings	N/A	Required for staff and for students (parents when on campus) when physical distancing is not feasible	Required for staff and for students when physical distancing is not feasible	N/A
Educational Programs	A-Expected Packet B-Independent Study	A-Distance Learning B-Independent Study	A-In Person-regular schedule B-Independent Study/Distance Learning	In-person regular schedule
Movement on Campus	N/A	N/A	Classroom, playground, gym assigned space and time in cohort	Regular movement
Transportation	N/A	N/A	Bus-loading @ regular capacity for eligible students, assigned seating Staggered private vehicle-drop off/pick up	Open to eligible students
Food Service	Possible (curbside)	Grab and Go (curbside)	Classrooms/Cafeteria Grab and Go (assigned area with cohort)	Cafeteria/Outside Spaces
SERRF Extended Learning Program	N/A	N/A	Open to eligible students	Open to eligible students
Extracurricular Activities	N/A	Not available	Possible w/further guidance	Open to eligible students
Campus Access	N/A	Restricted	Restricted	Probable



## Communication

The TCS Reopening Plan involves transparent, clear, and consistent communication with parents/guardians and staff to minimize chaos and confusion. Among the most important communication will attend to the health and safety of all. Beyond work done at the District level, all Districts will continue to work together to ensure the message - "Every student, every day!" - echoes throughout Tehama County; we want our community to understand the implementation measures we are taking in unison to ensure healthy and safe educational opportunities for the children we serve. In addition, consistent communication with TCHSA will be essential to ensure that our plan acts in response to the ever-changing local conditions. Specific District details about communication can be found in Appendix A.

## Promoting Healthy Hygiene Practices

The TCS Reopening Plan includes promoting healthy hygiene practices as recommended by CDE and CDC. This includes teaching about and ensuring hand washing and contact/covering when coughing and sneezing. It also includes posting signage about healthy practices. In addition, we will continuously ensure we have the equipment necessary to enact all hygiene aspects of the plan. Specific District details can be found in Appendix B.

### **Intensifying Cleaning, Disinfecting, and Ventilating & Personal Protective Equipment**

Additional cleaning measures as recommended by CDE and CDC are part of the TCS Reopening Plan. This includes cleaning and disinfecting buses and vehicles, school spaces and things, and providing increased ventilation whenever possible. In addition, we will continuously ensure we have the cleaning supplies necessary to enact all aspects of the plan; personal protective equipment will ensure personal health and safety for the staff who clean school facilities and vehicles. Our Districts aim to meet high cleanliness standards prior to reopening and to maintain a high level during the school year. Specific District details can be found in Appendix B.

### **Illness Prevention**

The TCS Reopening Plan attends to illness prevention and focuses on daily screening staff and students to check for signs and symptoms of Covid-19 at the school bus steps/upon arrival at school; this screening includes a visual wellness check, temperature check, and Covid-19 questions. In addition, the Plan ensures a consistent process for when a staff member or student becomes ill, including always ensuring contact tracing to limit continued spread. Our Districts aim to maintain healthy operations as we transition to Stage/Phase 4 and a healthy community and have plans for teaching students and staff about illness prevention, self-reporting, and monitoring health throughout the day. Specific District details can be found in Appendix C.

### **Physical Distancing and Face Coverings (Plans A and C, D as appropriate)**

Our Districts recognize the need to attend to the physical distancing standards in all school facilities and vehicles as recommended by the CDC when specific phases call for such and also understand the need to meet individual student medical, personal, or support needs, when necessary. The CDC currently recommends a minimum of 6 feet of distance between individuals. Because we have many varied facilities on our campuses, how space and facilities will be utilized will vary to ensure the 36 square feet per person standard is met when specific phases call for such. When physical

distancing cannot be maintained or achieved through other means (physical barriers, class size reduction classrooms), students will be required to use face coverings. In addition, all students will be required to wear face coverings when on the bus, when entering/leaving campus, when using the restroom, and when seeking a health check in the screening room/office. Staff are required to use face coverings when with students and with each other when physical distancing cannot be maintained. Instruction in physical distancing and the appropriate use of face coverings will be provided for students and staff. Specific District details can be found in Appendix D.

### **Educational Programs - Whole Child Supports**

The TCS Reopening Plan recognizes that this pandemic and school closure have undoubtedly impacted students' social emotional health in ways we may not yet recognize. As such, our priority will continue to be on focusing on the social emotional needs of our students. When our students return to school, it will be essential that we continue to provide the mental health supports they need. We believe that our student health and well-being must be attended to in order for student academic learning to occur. As such, our Districts will continue to provide quality instruction in these areas when school resumes. In addition, extracurricular activities to enhance the educational experience will be provided as allowed. District details can be found in Appendix E.

### **Educational Programs - Instructional Programs for Academics**

Our Districts understand the uniqueness of each family as they navigate through this pandemic. As such, they will offer a long-term Independent Study (some Districts will call this Distance Learning) for students, on a quarter by quarter/trimester basis; in this program, students will complete their learning at home. When allowed, we will implement Plan A, an In-Person Regular Schedule. Students will attend school five days a week with some modifications to arrival and departure times and a focus on keeping students in their cohort as much as possible. Plan C, Distance Learning, will be implemented when we are directed by the local public health official that there is significant community spread; most likely this will come following a school closure (Plan D), as we scale up. Students on Independent Study (Distance Learning for those Districts who call it that) will remain in their program; however, all other students would be provided with Distance Learning opportunities. When/if we experience a positive Covid-19 case on a campus or community surge, our school/s will implement Plan D. Students will have an opportunity to engage in learning at home during this time. Students with Individualized Educational Plans, 504 Plans, and English Learners will continue to receive their designated supports in all plans. Specific District details can be found in Appendix E.



### **SERRF Extended Learning Program**

Our Districts recognize the need for continued quality child care as we transition to reopening. In the TCS Reopening Plan, the SERRF Expanded Learning Program will be available in part until we move to Phase/Stage 4. When/if we are in Plan A, the SERRF Extended Learning Program will be available for eligible families. However, when/if we are in Plan C (and D), it will not be available at this time. At all sites, staff will work to ensure communication, the promotion of healthy hygiene, intensifying cleaning, disinfecting, and ventilation, and illness prevention. Physical distancing standards will be expected to be adhered to and barriers, face coverings, and the organization of class/family cohorts will be used. Specific District details can be found in Appendix E.

### **Campus Access**

Tehama County school campuses will not be accessible beyond students and staff until we move to Phase/Stage 4 and fully reopen. This includes parents/guardians, visitors, volunteers, and community members/others who request Use of Facilities. All Board Meetings, Local Control Accountability Meetings, Site Council Meetings, Title I Meetings, District English Learner Advisory Committee Meetings, English Learner Advisory Committee Meetings, and Parent Club meetings will be held virtually; in-person accommodations will be made for those with limited/no digital access from home and illness prevention and physical distancing measures will be followed. Protocols will be established for accepting deliveries safely. In addition, protocols will be established for student and parent/guardian campus access for Distance Learning meetings by appointment when/if we are in Plan C.

### **Employee Support**

Our Districts are committed to ensuring that staff have the necessary training and support. As such, we will continue to work with our stakeholder groups as new scientific knowledge and subsequent guidance is given in order to refine the details of our plan. We will develop/provide staff training on all aspects of this plan, in general, and specifically for those who work in certain areas of our systems. District details can be found in Appendix F.

### **Appendix A Communication**

### **Appendix B**

**Promoting Healthy Hygiene Practices**  
**Intensifying Cleaning, Disinfecting, and Ventilating**  
**Personal Protective Equipment**  
**Equipment Availability**  
**Cleaning Supply Availability**

**Appendix C**

**Illness Prevention**  
**Self-Reporting**  
**Screening**  
**Monitoring**  
**When there is a fever of 100.4 or higher**  
**When there is a positive case of Covid-19**  
**Contact Tracing**

**Appendix D - Plan A and C (D as appropriate)**

**Physical Distancing and Face Coverings**  
**Transportation**  
**Arrival/Departure**  
**Classrooms**  
**Movement on Campus**  
**Playgrounds/Outside Spaces/Athletics**  
**Staff Workplaces**

**Appendix E**

**Educational Programs**

**Long-term Independent Study**  
**In-person Regular Schedule**  
**Distance Learning**  
**SERRF Expanded Learning**

**Appendix F**

**Employee Support**